

Presented by :

Simon TRAPIER
Aerodynamics Department
Airbus

Drag Prediction Workshop 4

Airbus results

- **elsA solver:**

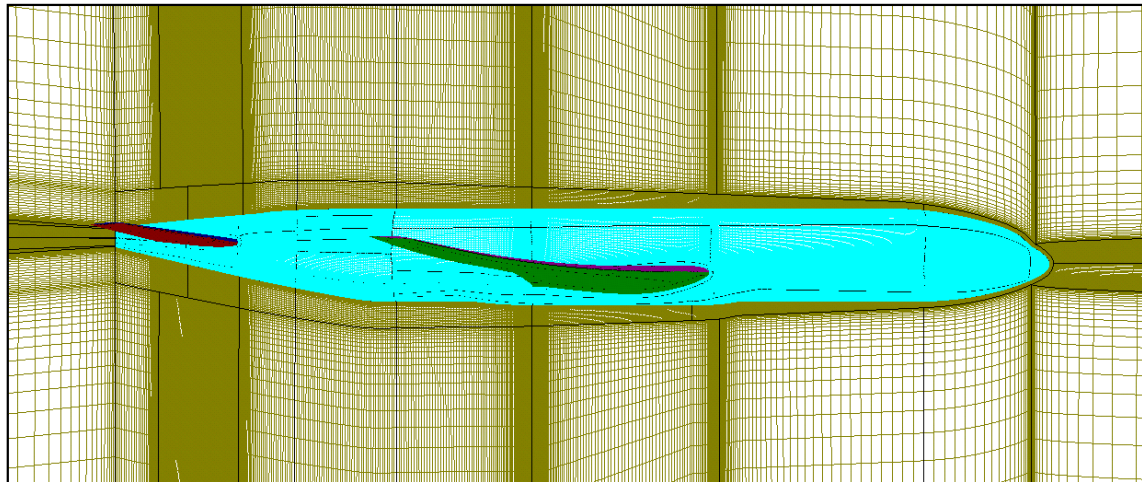
- ▶ Developed by ONERA
- ▶ Centred scheme
- ▶ Dissipation : Jameson type scalar scheme
- ▶ Implicit time integration : LU-SSOR method

- **Turbulence models used :**

- ▶ Spalart-Allmaras (SA) 1-equation model
- ▶ Menter k - ω Shear Stress Transport (SST) 2-equations model

Grids characteristics

- Structured, multiblock grids
- In compliance with DPW committee gridding guidelines
- C-topology around fuselage, wing and tail

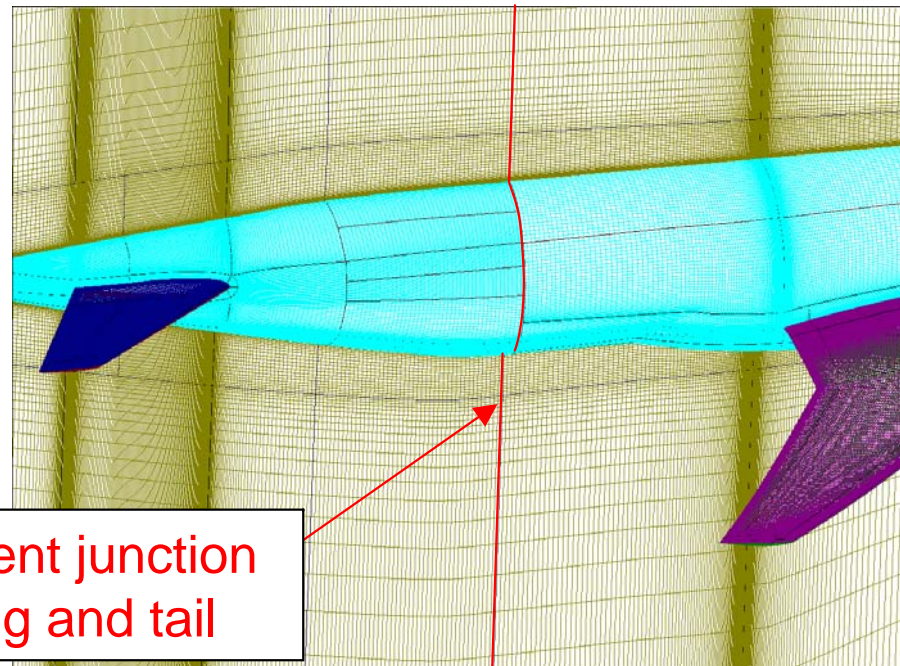


- 7 grids generated :
 - Coarse, Medium, Fine, Extra fine at $iH=0^\circ$
 - Medium at $iH=-2^\circ$, $+2^\circ$, No Tail

Grids characteristics

- Grids dimensions :

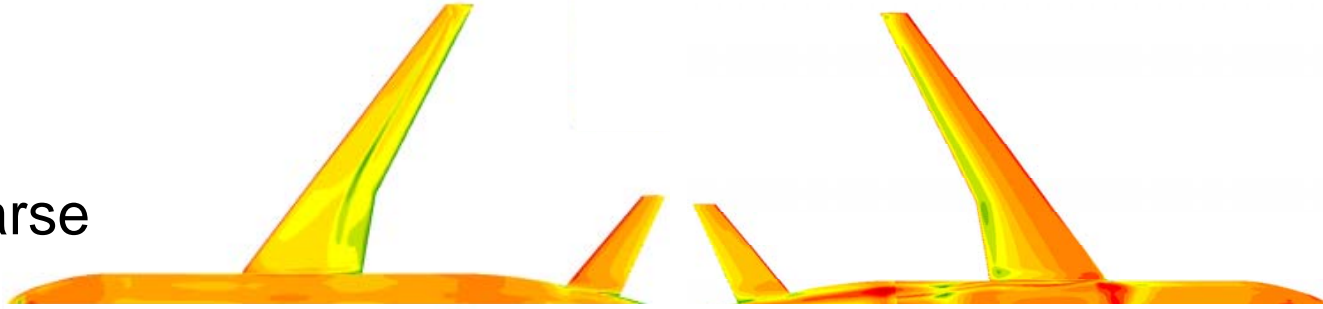
Grid level	Nodes	Zones	y+	Cells across trailing edge
Coarse	4.6 millions	146	1	18
Medium (no tail)	8.9 millions	128	0.666	24
Medium (tail)	13.5 millions	167	0.666	24
Fine	37.2 millions	228	0.444	32
Extra fine	108.3 millions	334	0.296	48



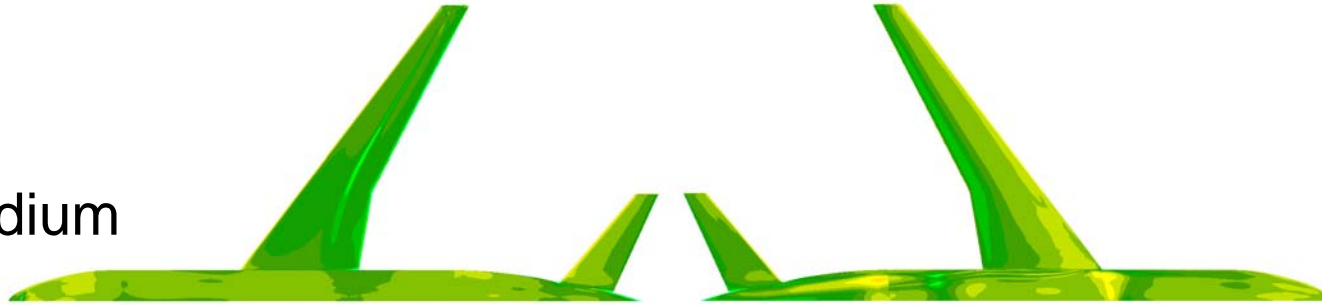
Non-coincident junction
between wing and tail

Grids characteristics : y^+ at first cell

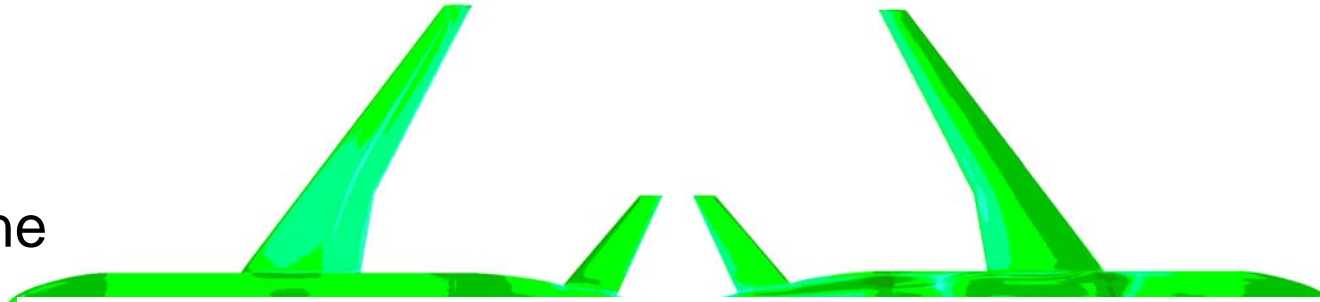
Coarse



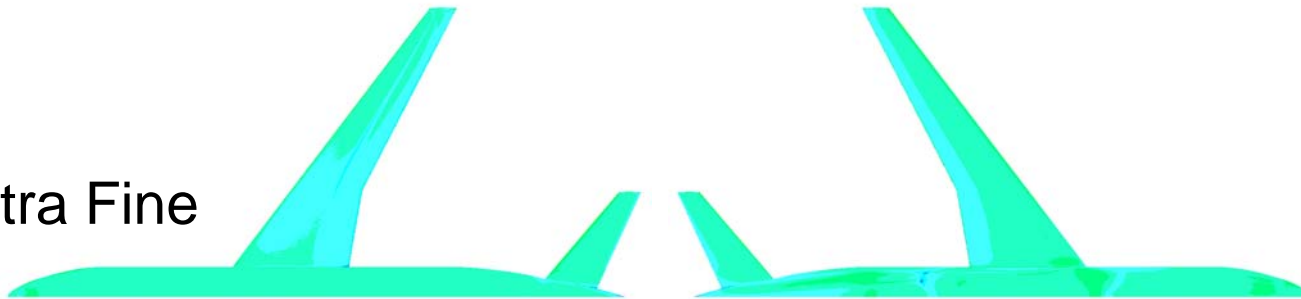
Medium



Fine

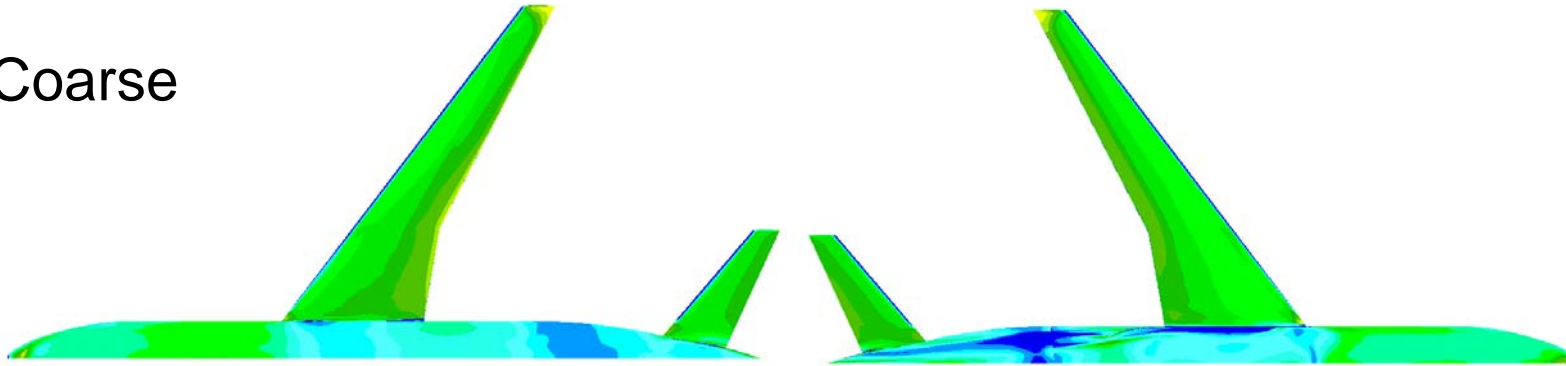


Extra Fine

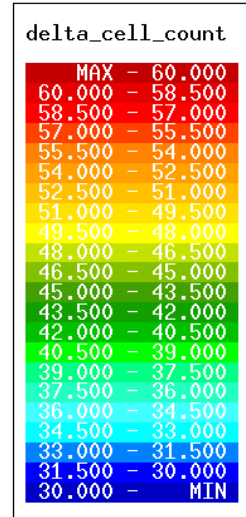
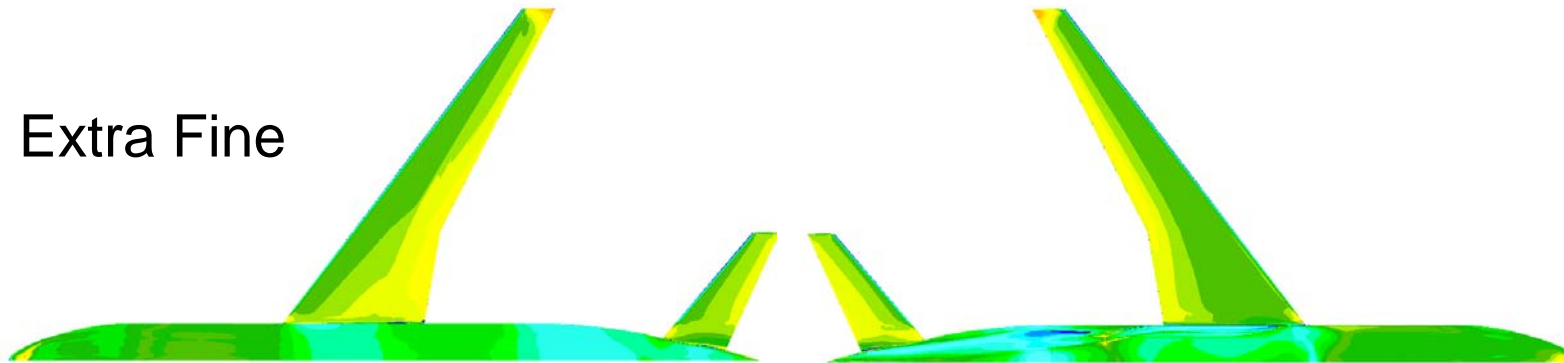


Grids characteristics : number of cells in boundary layer

Coarse

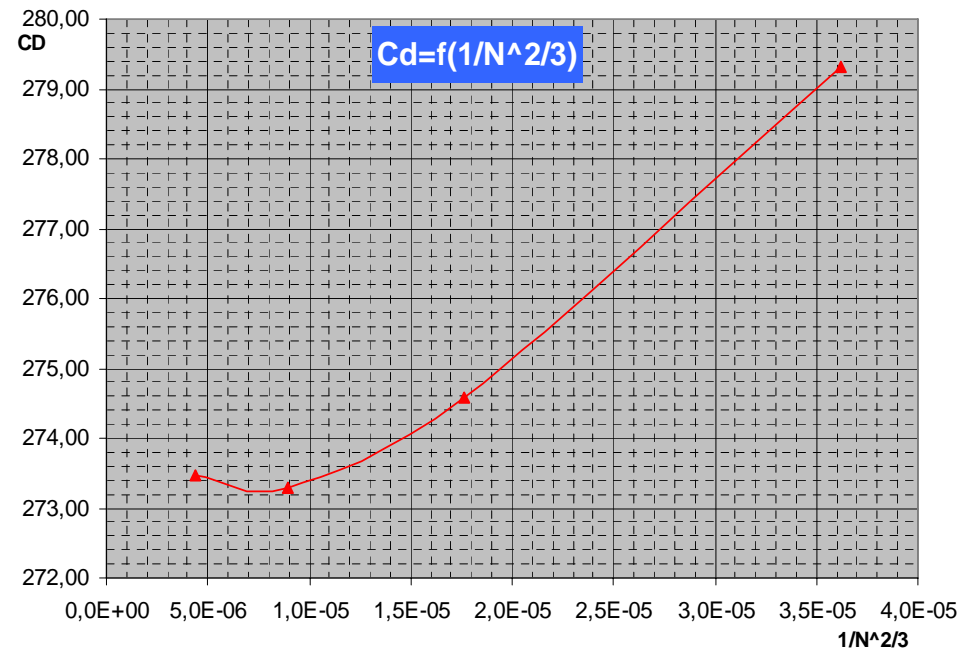
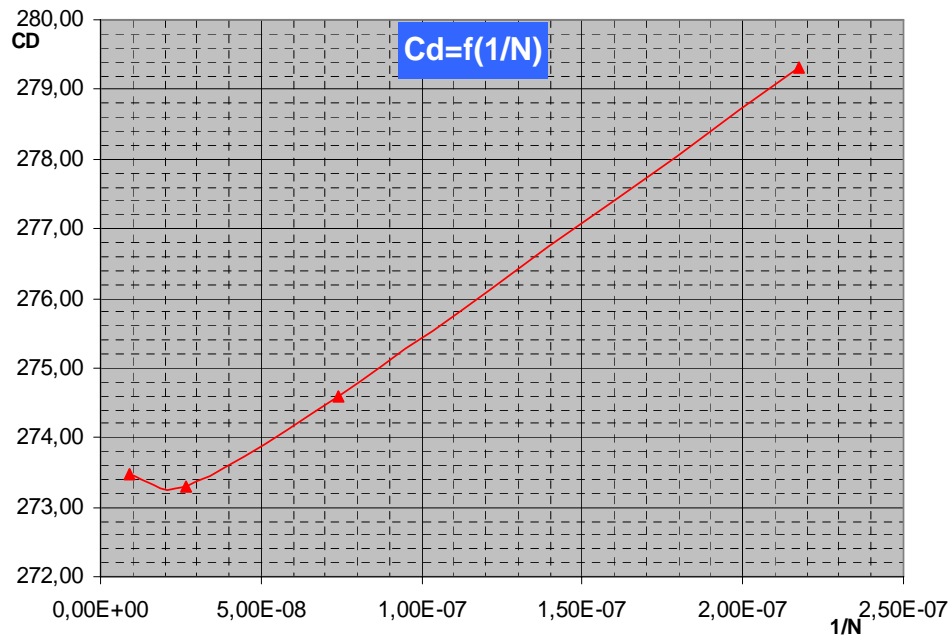


Extra Fine



Grid convergence at $C_L=0.5$

- Total drag



N = number of grid nodes

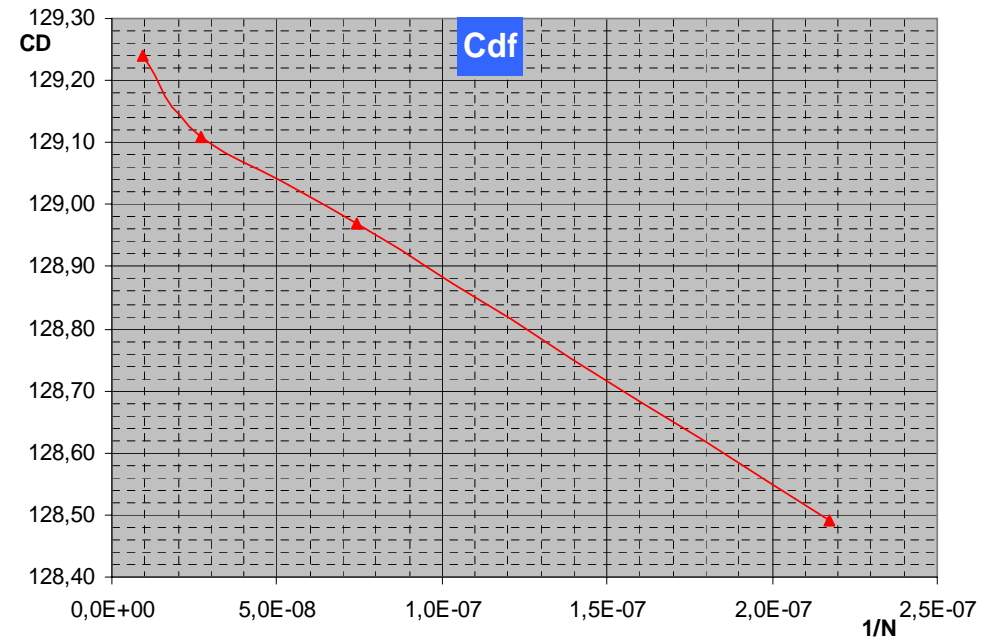
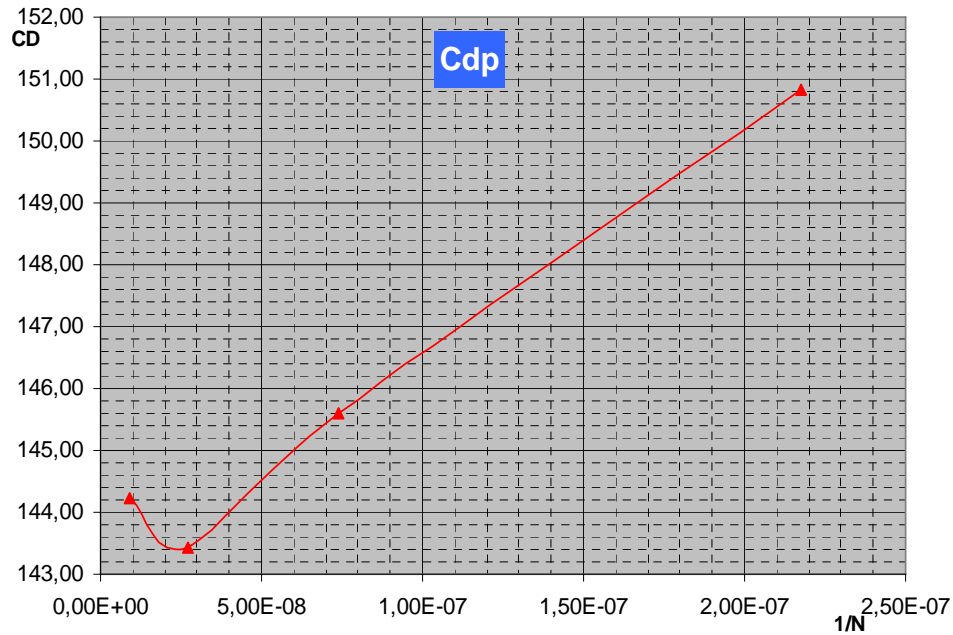
$C_L=0.5$

M=0.85

k- ω SST model

Grid convergence at $C_L=0.5$

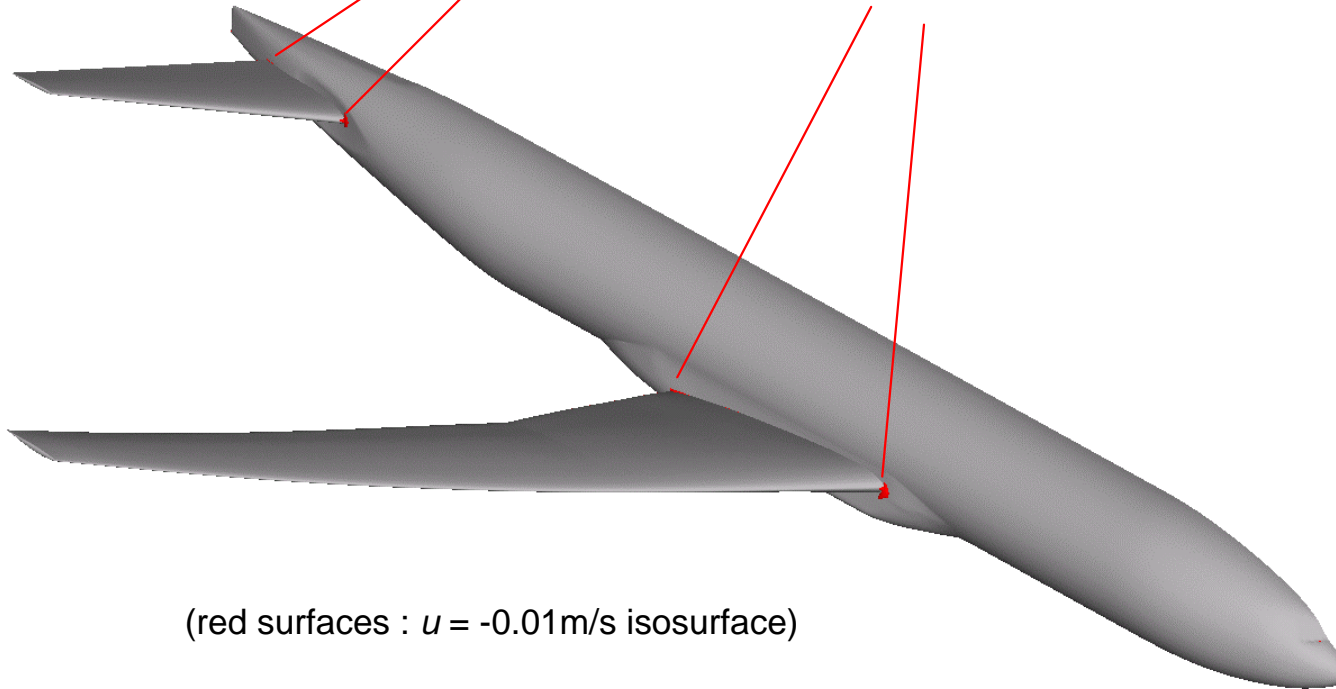
- Pressure and friction drag



Flow at $C_L=0.5$

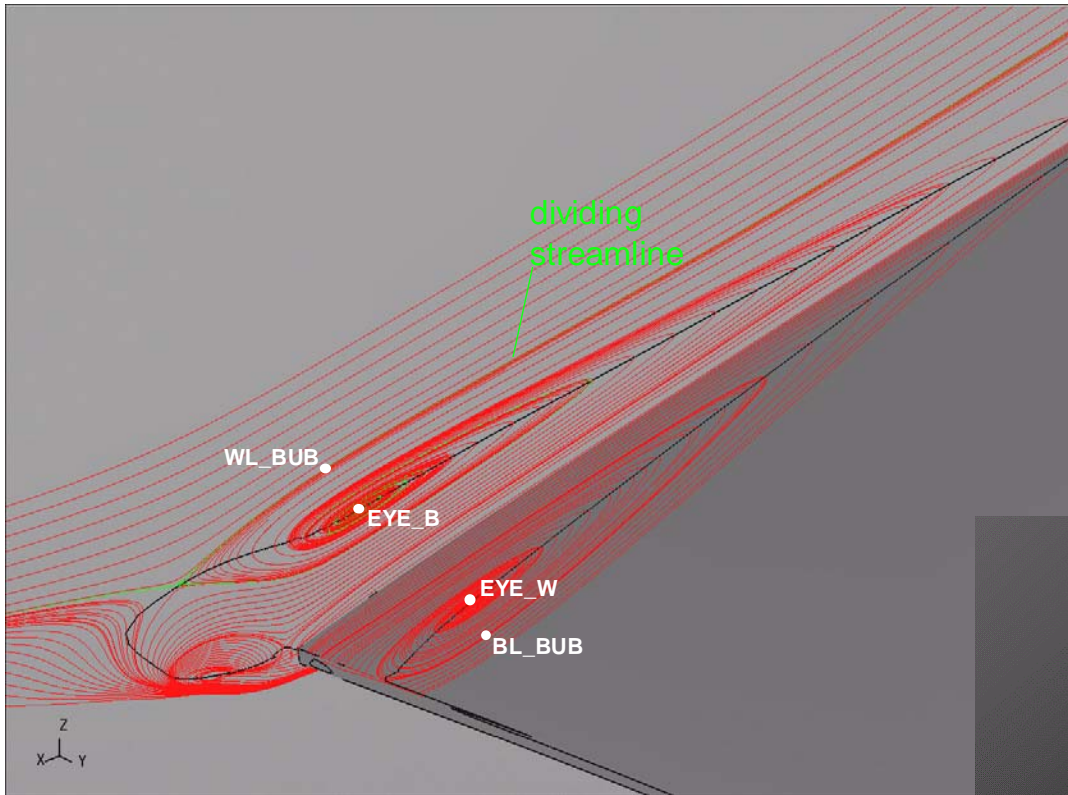
$C_L=0.5$, fine grid

Small separated areas exist at wing and tail roots leading edge and trailing edge

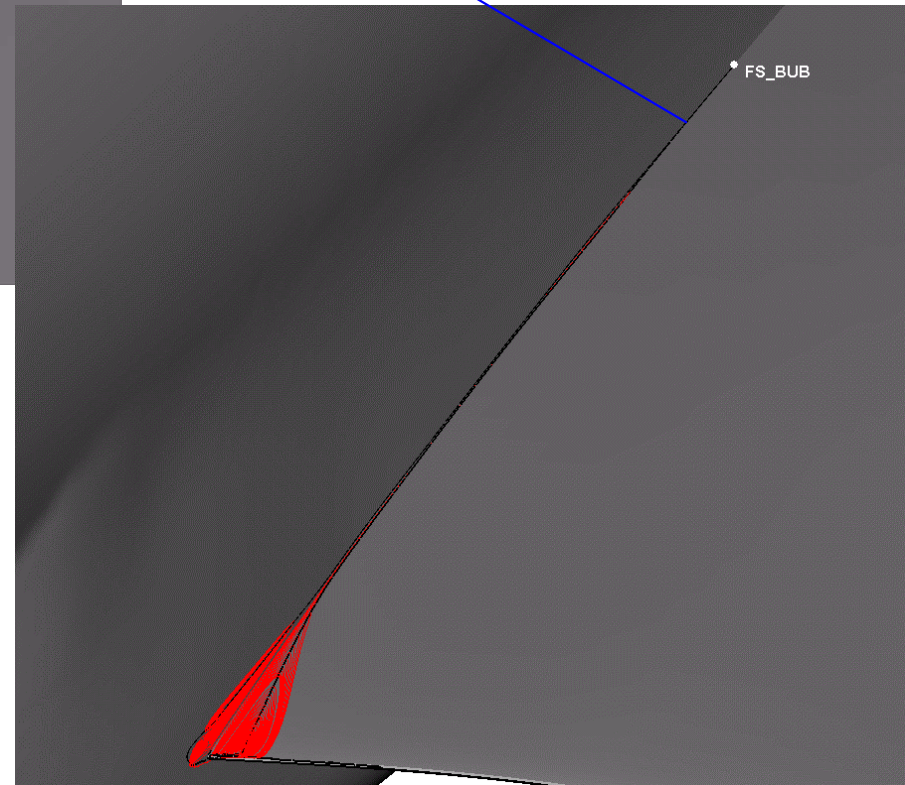


(red surfaces : $u = -0.01\text{m/s}$ isosurface)

Wing-fuselage separation bubble geometry



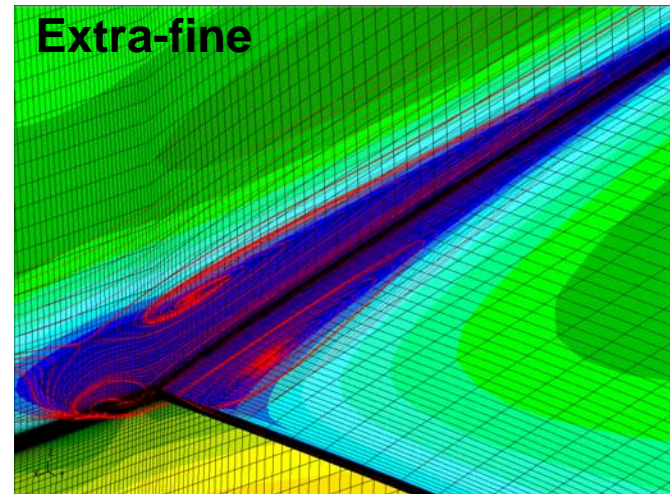
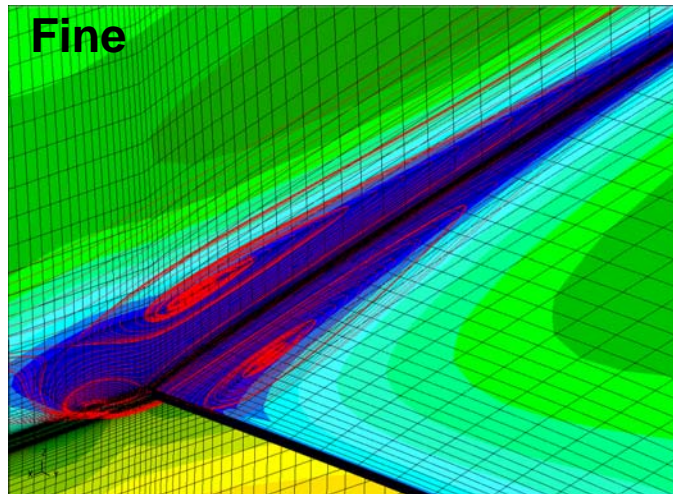
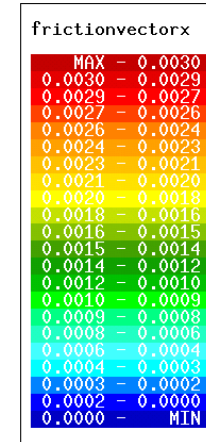
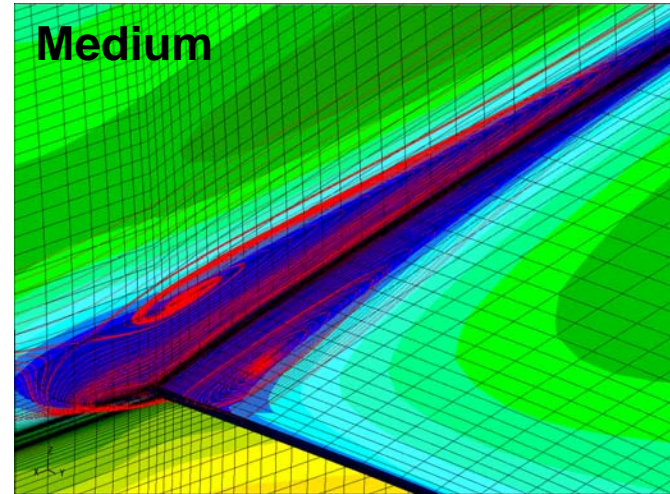
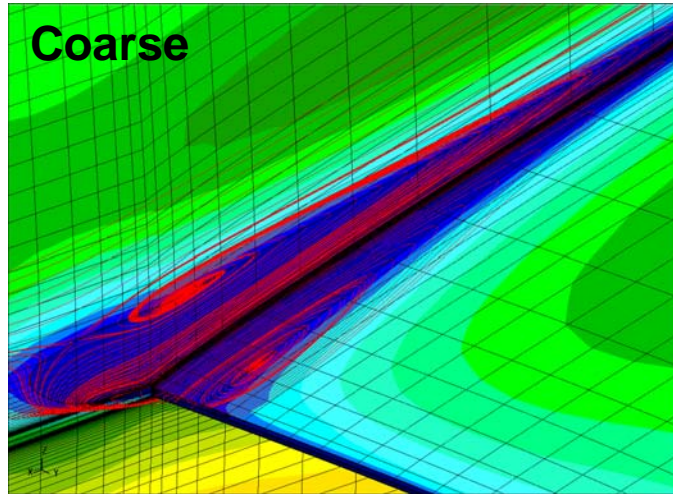
Small region (not more than 5 mm wide) of negative c_{fx} starting at a quite upstream location : FS_BUB abscissa is low



$C_L=0.5$, fine grid

(black lines : $c_{fx}=0$ contour)

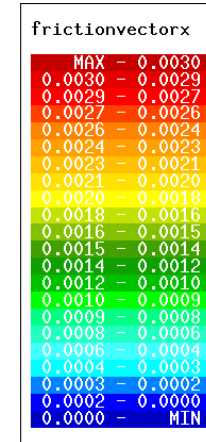
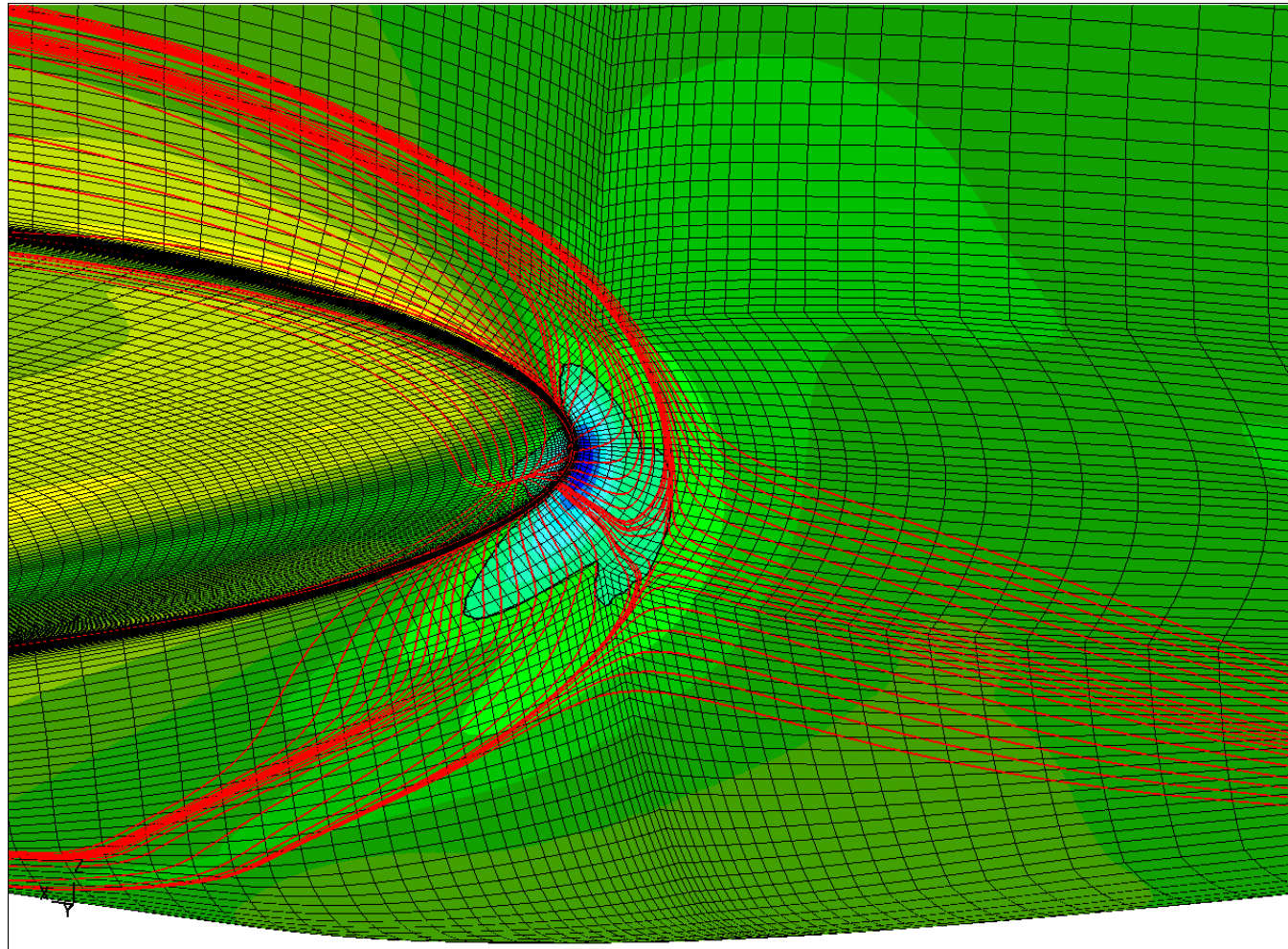
Wing-fuselage separation bubble geometry



$C_L=0.5$

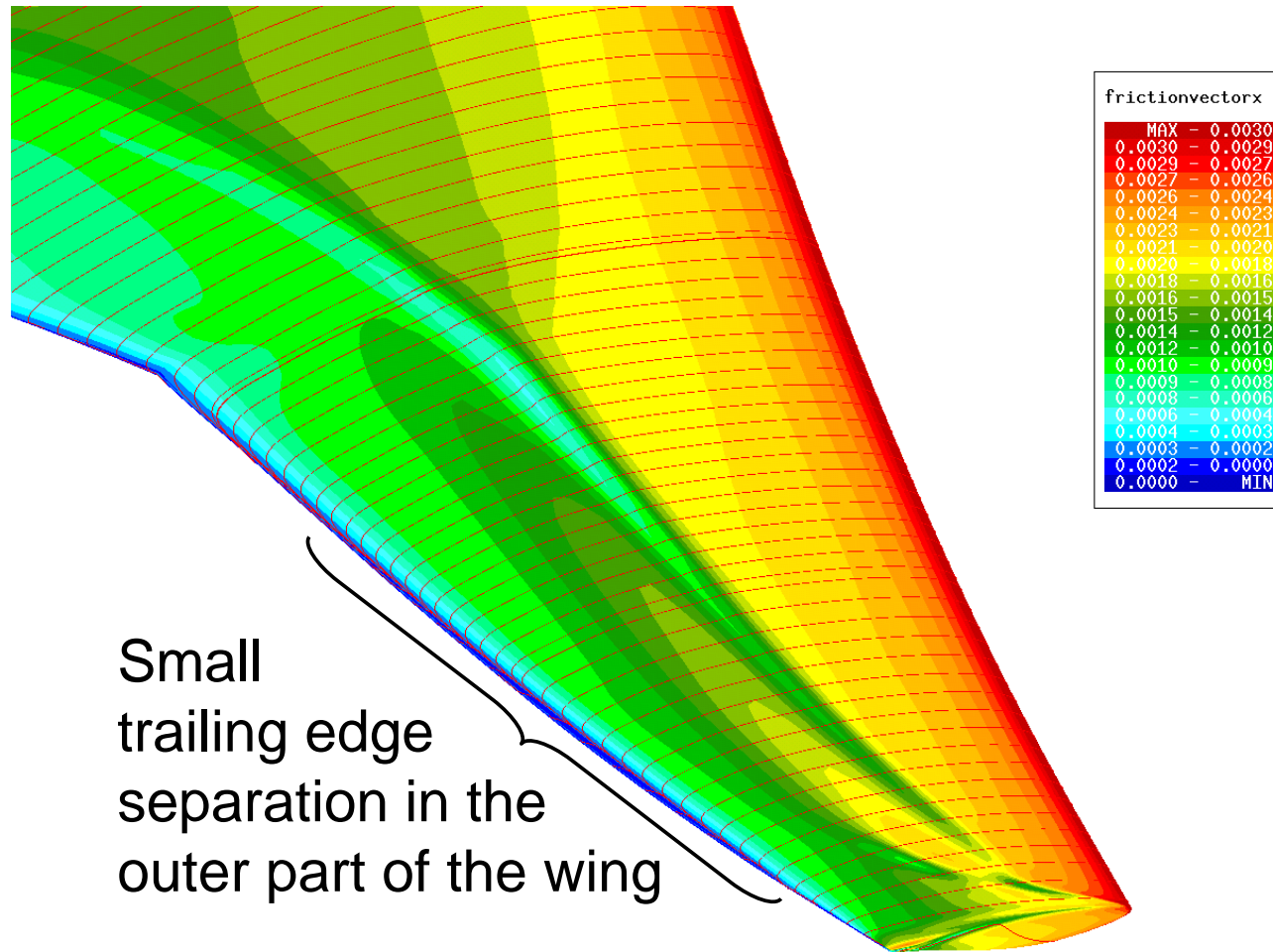
No strong influence of mesh refinement on separation bubble geometry

LE separation bubble geometry



$C_L=0.5$, fine grid

Trailing edge separation



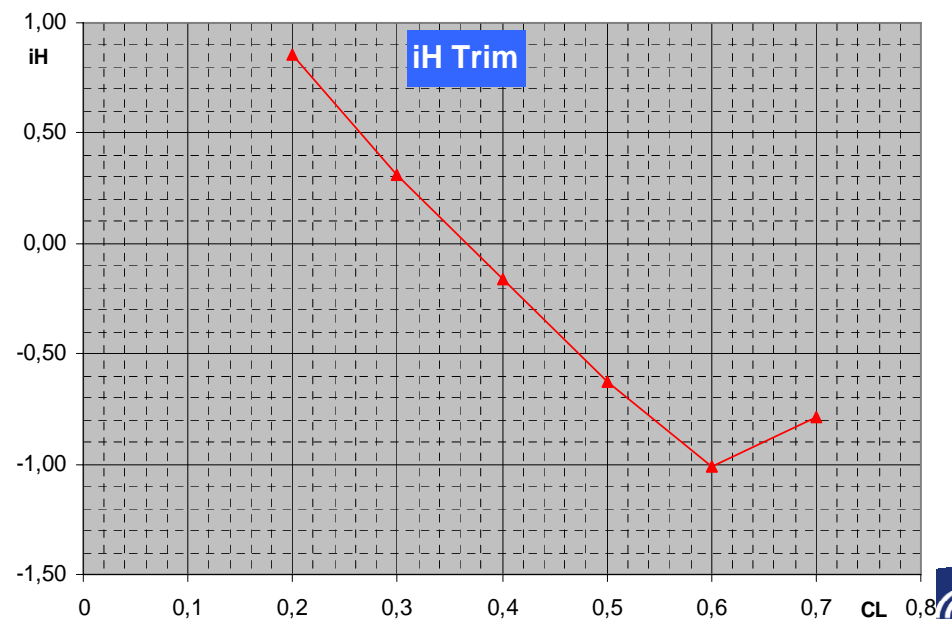
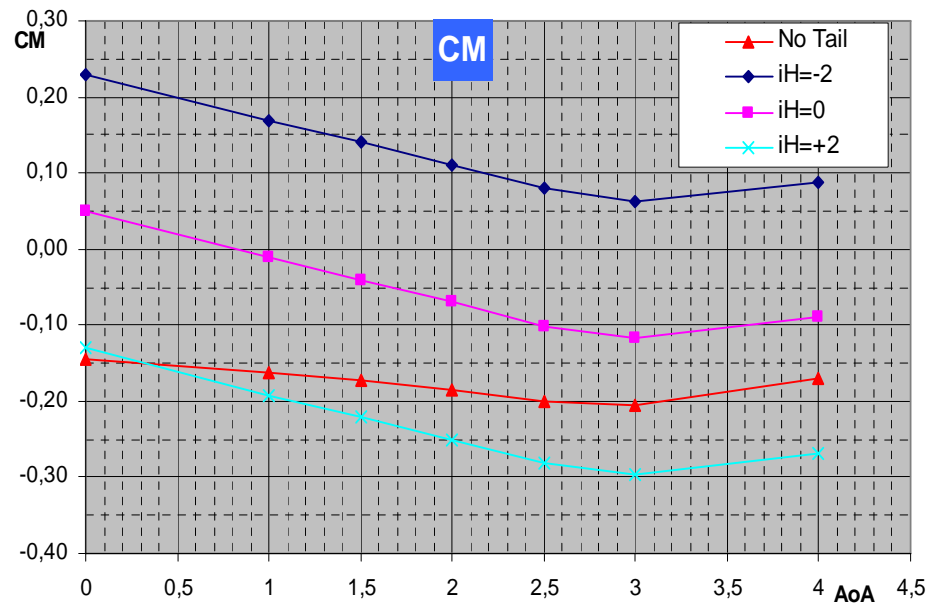
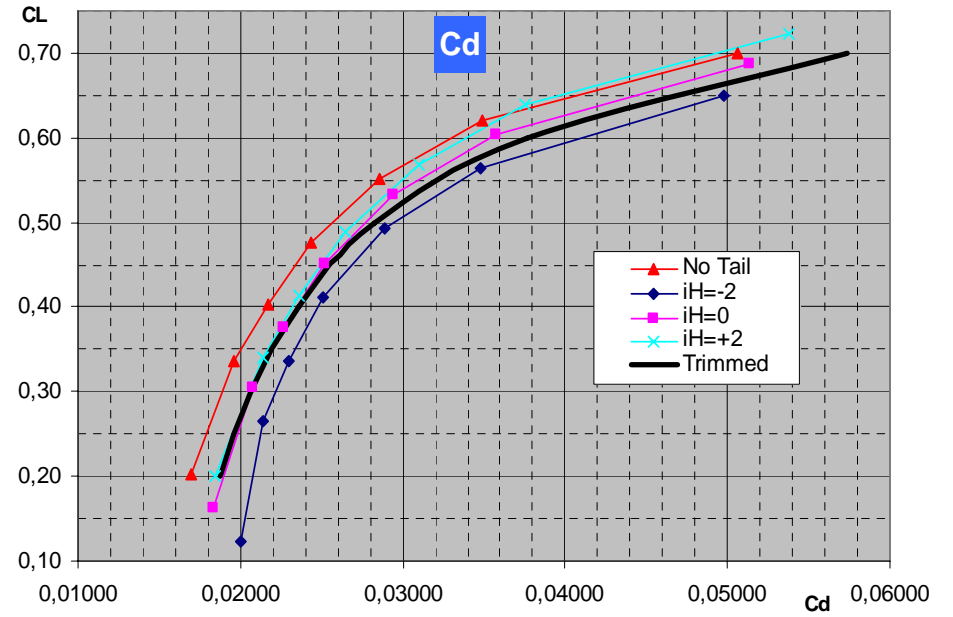
Small trailing edge separation in the outer part of the wing

$C_L=0.5$, fine grid

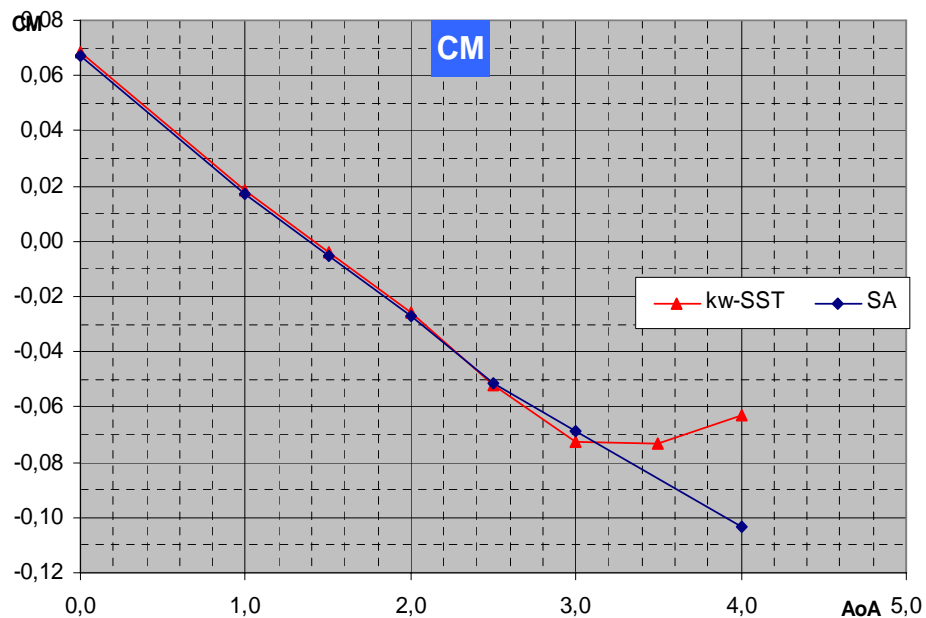
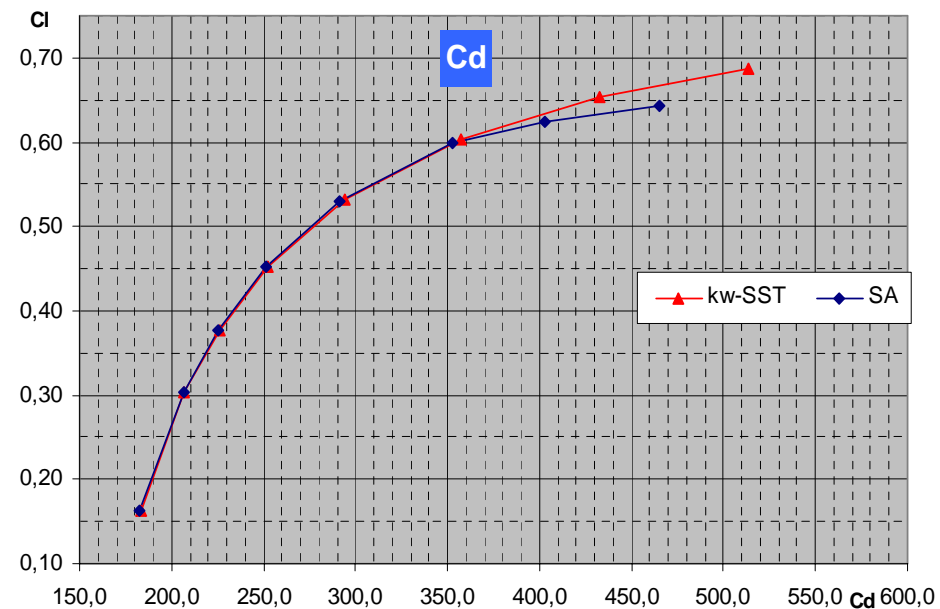
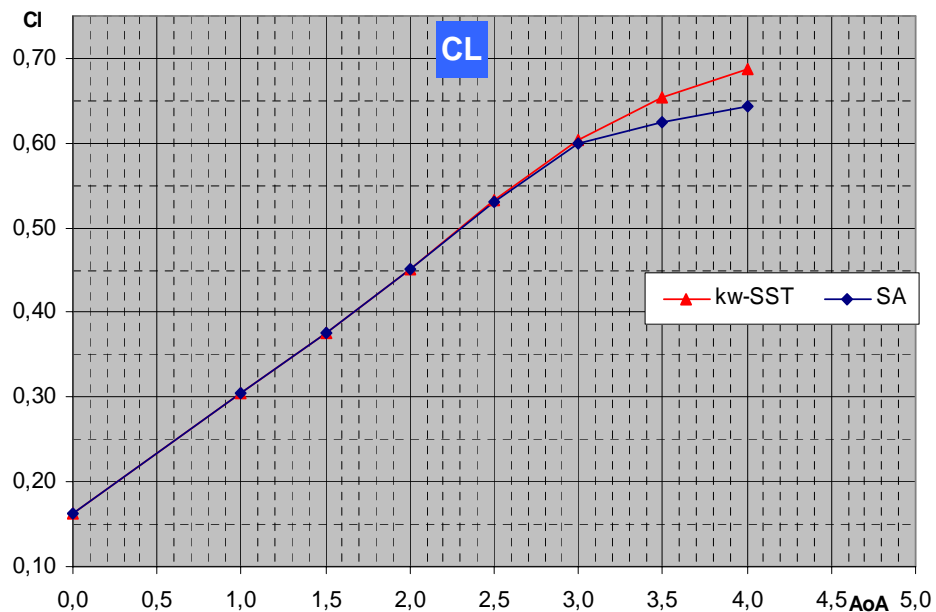
Polars

M=0.85

Medium grids

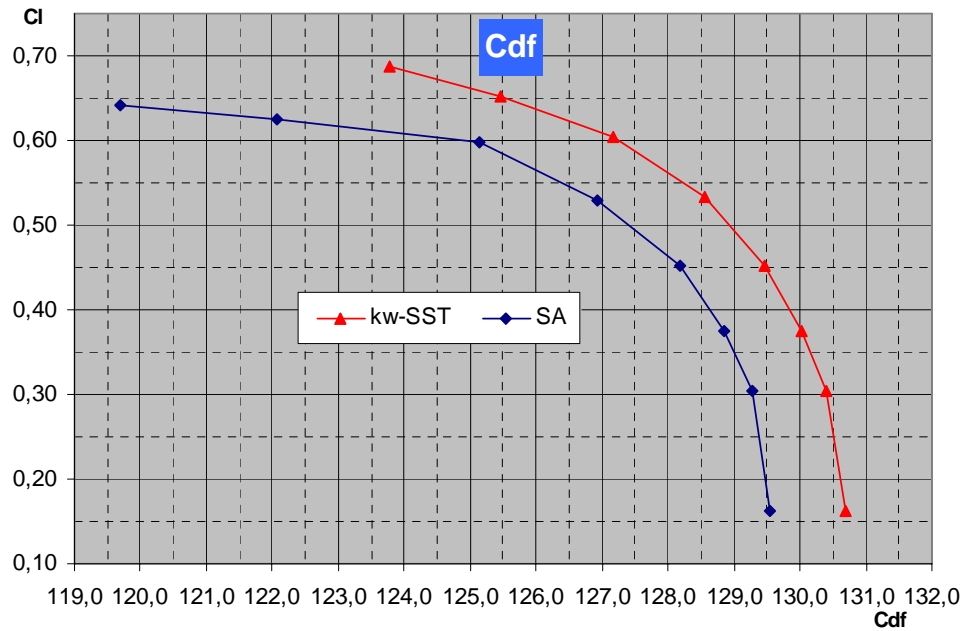


Turbulence model effect



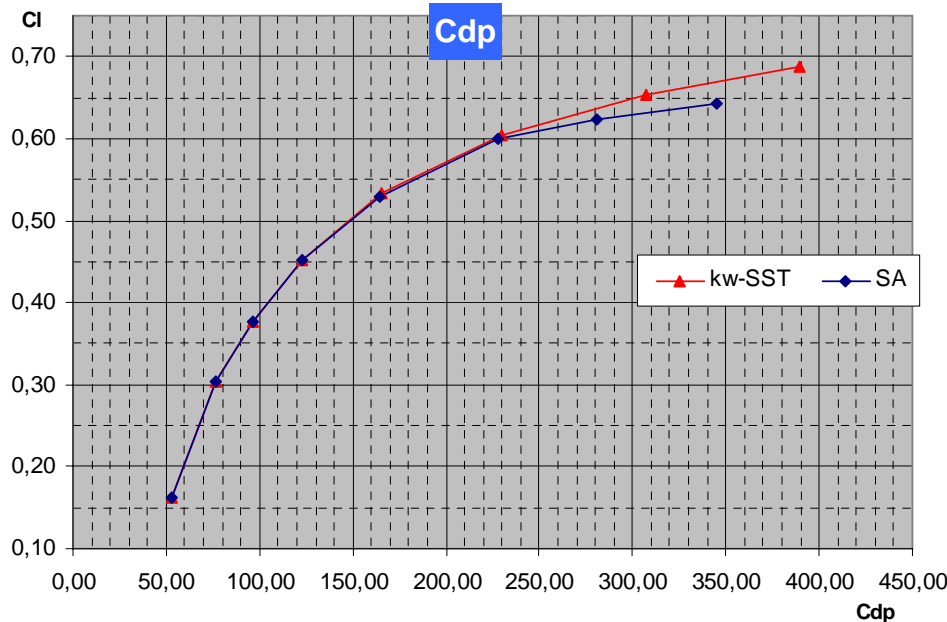
SA and SST models diverge on C_L , C_D and C_M for $\alpha > 3^\circ$

Turbulence model effect



- **Linear range ($\alpha=0$ to 2.5°) :**

Good agreement for C_{dp} , drag difference between SA and SST is due to skin friction (1 to 1.5 drag counts)



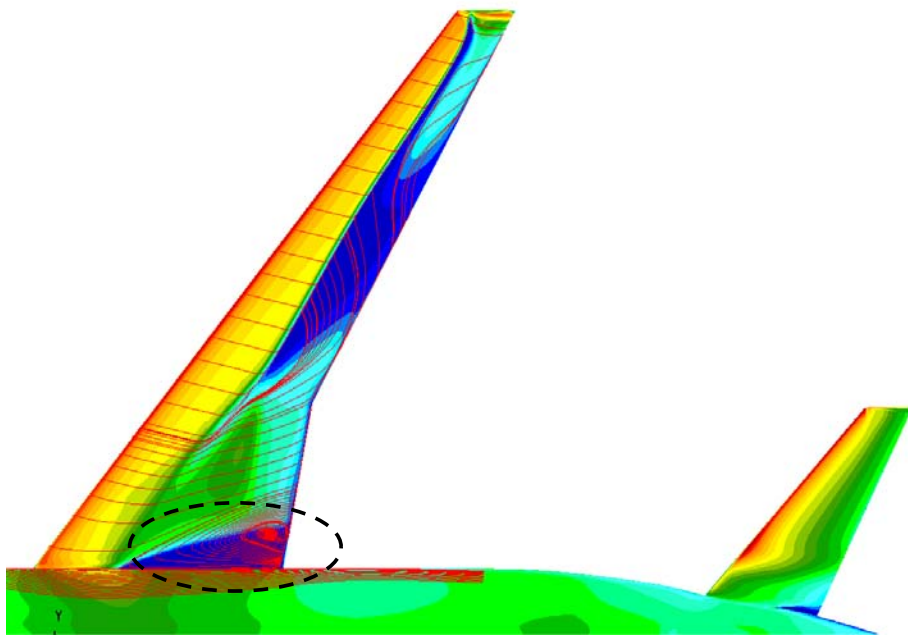
- **High angles of attack ($\alpha > 3^\circ$) :**

Divergence of pressure drag

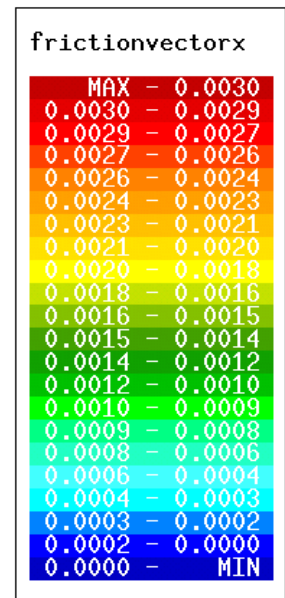
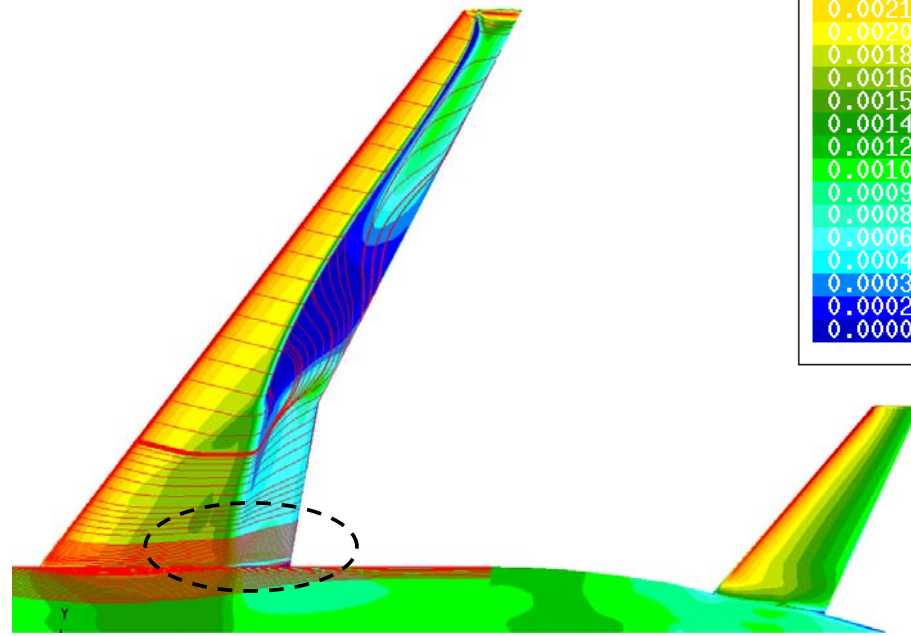
Turbulence model effect

- Spalart-Allmaras model overestimates the wing-fuselage separation at high angles of attack ($>3^\circ$)

Spalart-Allmaras, $\alpha=4^\circ$



$k\omega$ -SST, $\alpha=4^\circ$



Conclusions

- 4 grid levels used, from 4.6 to 108.3 millions nodes
- No clear grid convergence achieved for extra-fine grids
- Separated areas observed at wing root (leading edge and trailing edge), independent of grid level
- $k\omega$ -SST model retained for submitted results because of better robustness at high angles of attack

© AIRBUS FRANCE S.A.S. Tous droits réservés. Document confidentiel.

Ce document et son contenu sont la propriété d'AIRBUS FRANCE S.A.S. Aucun droit de propriété intellectuelle n'est accordé par la communication du présent document ou son contenu. Ce document ne doit pas être reproduit ou communiqué à un tiers sans l'autorisation expresse et écrite d'AIRBUS FRANCE S.A.S. Ce document et son contenu ne doivent pas être utilisés à d'autres fins que celles qui sont autorisées.

Les déclarations faites dans ce document ne constituent pas une offre commerciale. Elles sont basées sur les postulats indiqués et sont exprimées de bonne foi. Si les motifs de ces déclarations n'étaient pas démontrés, AIRBUS FRANCE S.A.S serait prêt à en expliquer les fondements.

AIRBUS, son logo, A300, A310, A318, A319, A320, A321, A330, A340, A350, A380 et A400M sont des marques déposées.



AIRBUS

**AN EADS JOINT COMPANY
WITH BAE SYSTEMS**